

di-GPS-Link Utility

User Guide

Version 1.0

di-GPS-Link utility is developed to provide the basic functions to access the data logger of di-GPS Pro L/Mini 3L.

These functions include:

- Password/Username update
- Log configuration update
- Log data download and conversion

To use di-GPS-Link, you will need the items below:

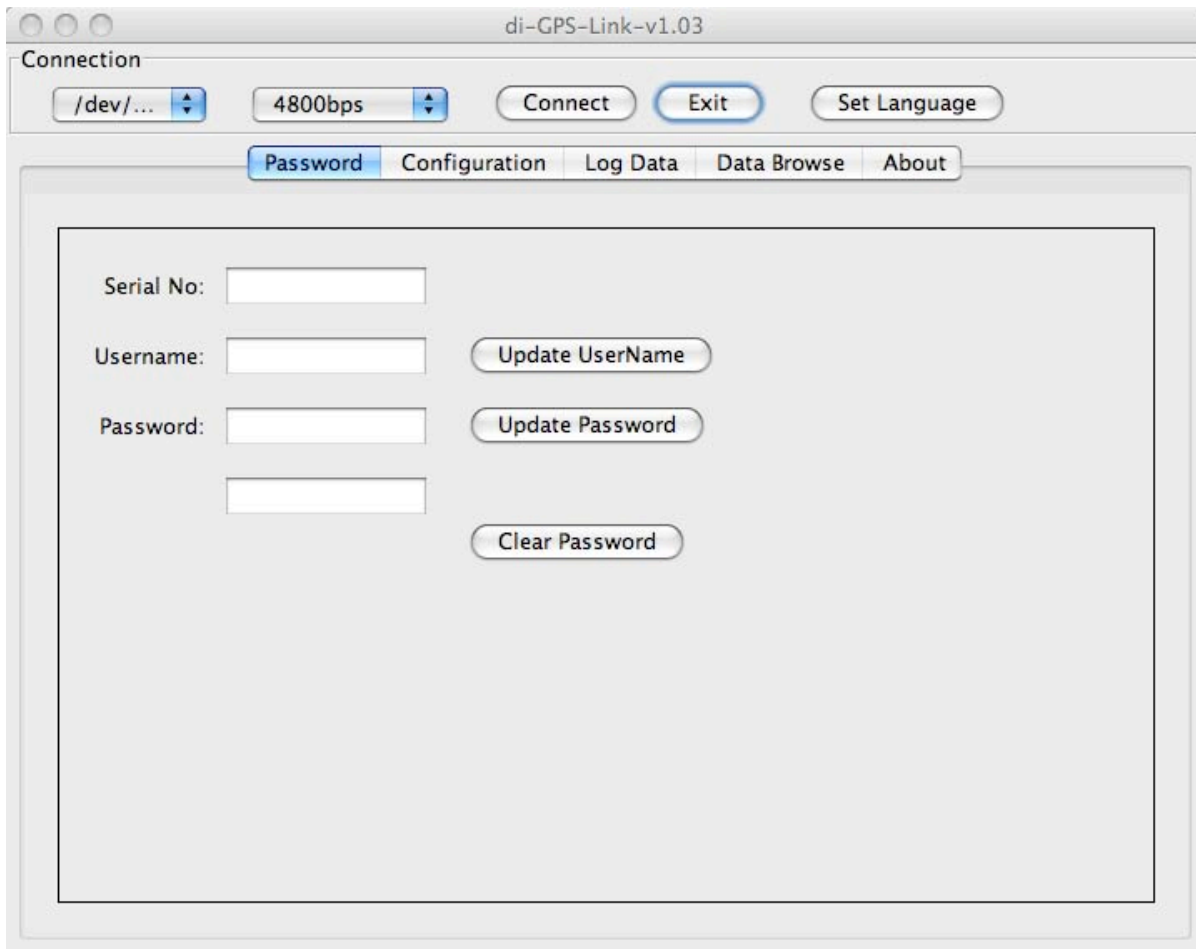
- One di-GPS Pro L/Mini 3L unit
- One 10pin to USB cable
- One host PC Windows/Mac with USB ports and di-GPS Pro L/Mini 3L USB driver installed
- di-GPS-Link Utility software

[Connection] Establish serial port connection and login the unit

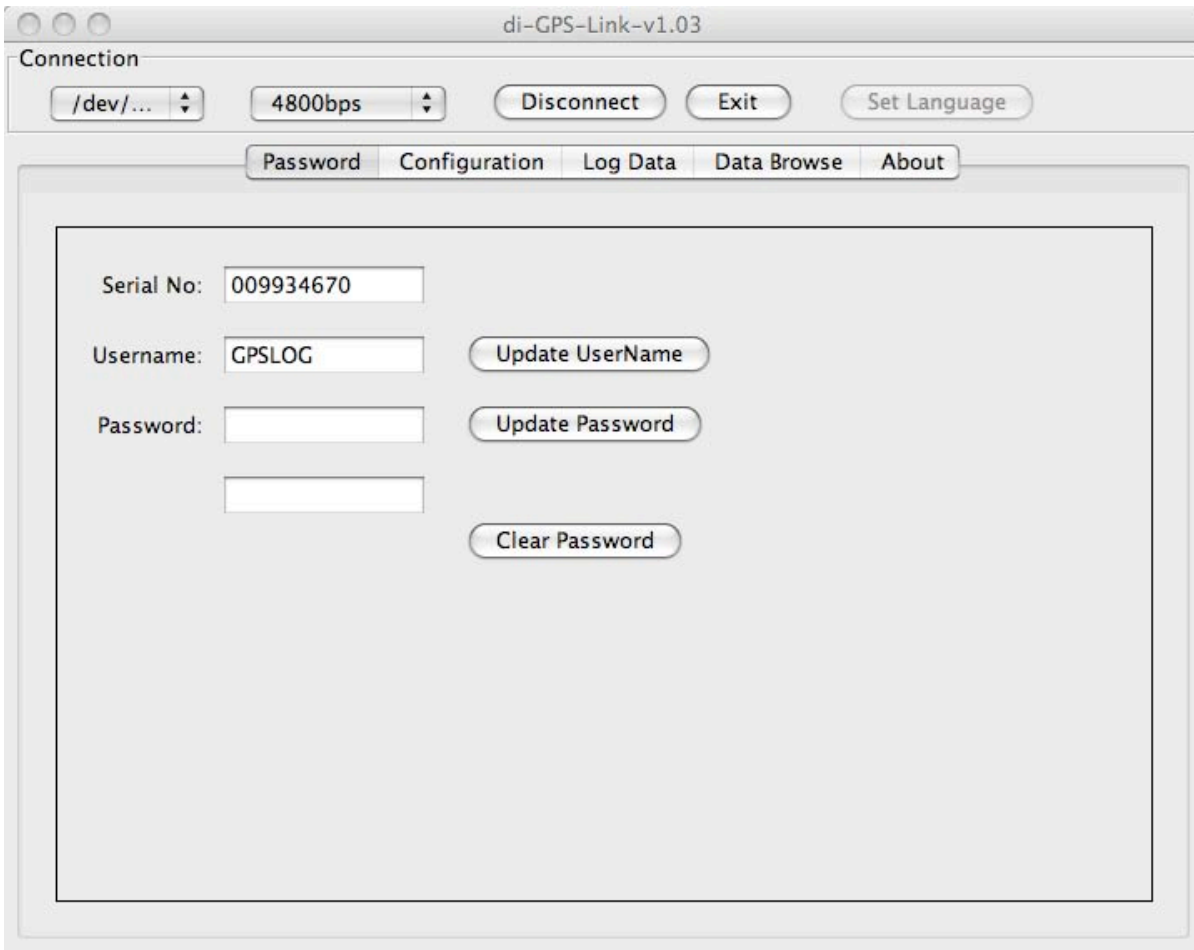
Select COM port properly. The baud rate for the unit is fixed at 4800 bps.

Press [Connect] button to start connection.

Once connected, the device serial number and username is displayed. Or if password is set, you will be asked to input the password. The device has null password by default.



Set communication parameters



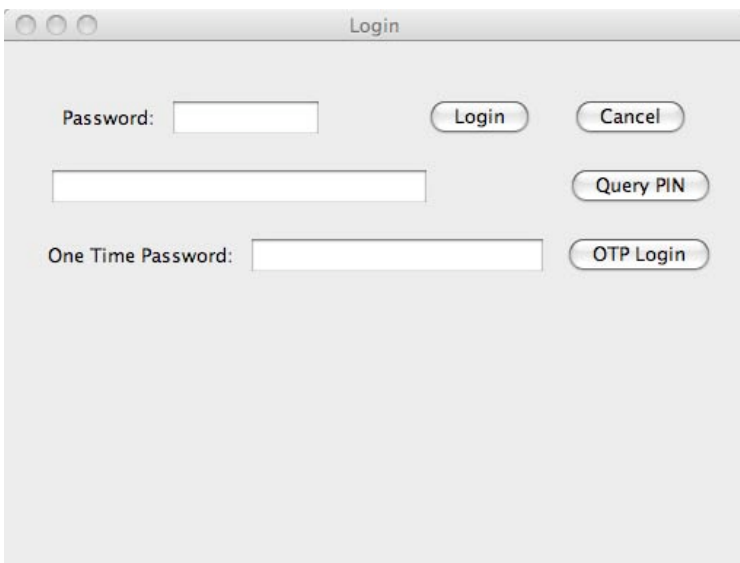
Connected with null password

Please input password and click [Login] to login the device.

Should the password for the unit is lost, click [Query PIN] to get a PIN string.

Send the PIN string and the serial number of your di-GPS unit to info@di-gps.com. You will receive a OTP (One Time Password).

OTP can be used to login the unit and clear the old password.



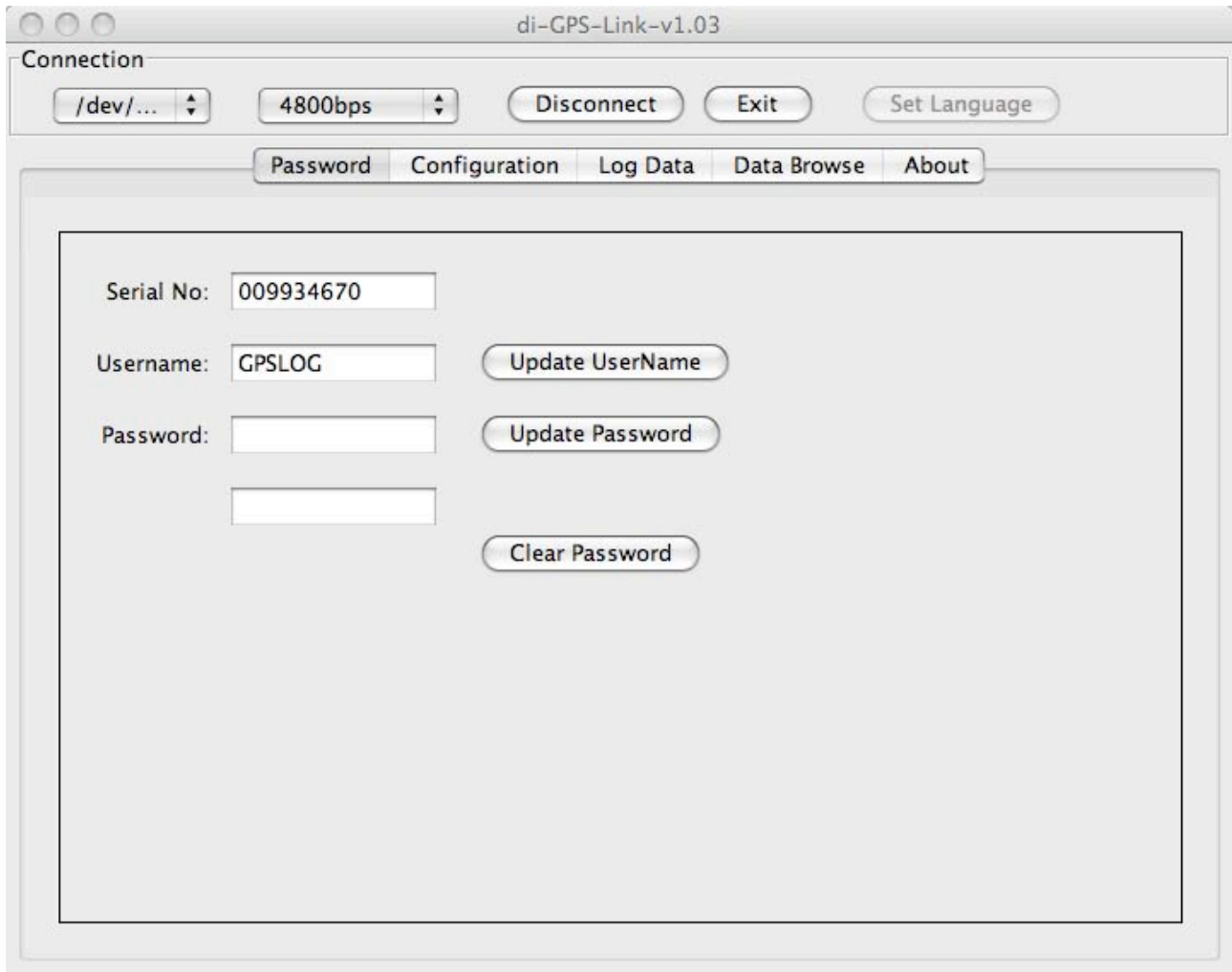
Input password or OTP to login the unit

Password: Maintain username and password

Update Username: change device user name, maximum 15 characters, default GPSLOG

Update Password: the valid range is 0 to 999999999, default null

Clear Password: remove current password



Update Password

Configure: Maintain device configuration

Log Mode: log data by time interval (0) or distance interval (1), default time interval (0), disable(2)

Time Interval: specify time interval to log (1..65535 seconds) if position fix is available, default 1

Distance Interval: specify distance interval to log (1..65535 meters) if position fix is available, default 32

Disable: Disable the data logger function (the last fixed log function not available in disable mode)

Cyclic Mode: overwrite the oldest point if memory full, default enabled

Minimum Speed: specify the minimum speed to log . (0:255KMH, 0:off), default off

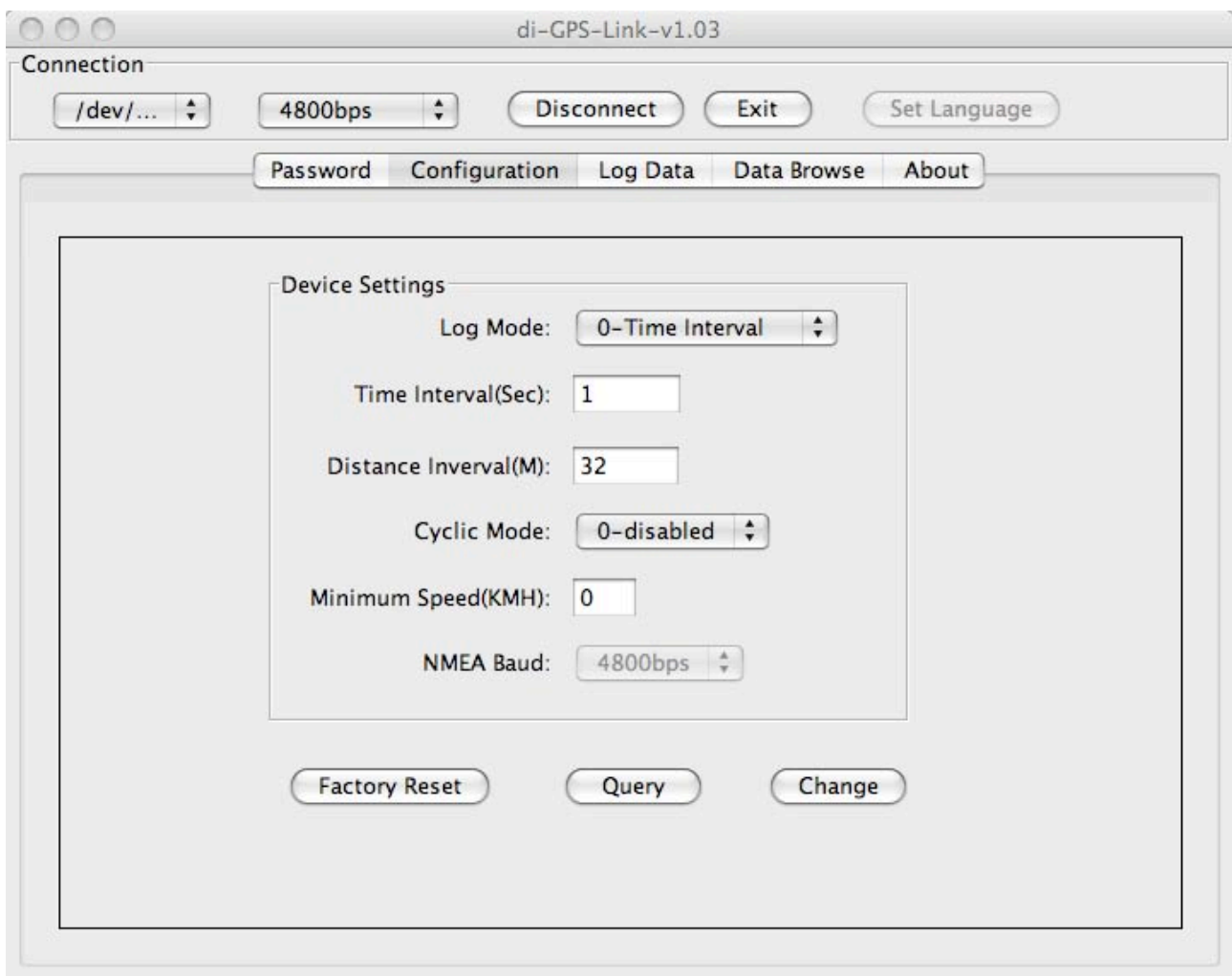
NMEA Baud: the NEAM output baud rate is fixed at 4800 (DSLRL connection only work in 4800 baud rate)

The value takes effect next time the unit restarts.

[Change]: update the configure to the unit

[Query]: read back the current configure of the unit

[Factory Reset]: set the configuration, username and password of the unit to its default values.



Log Data: Maintain log data

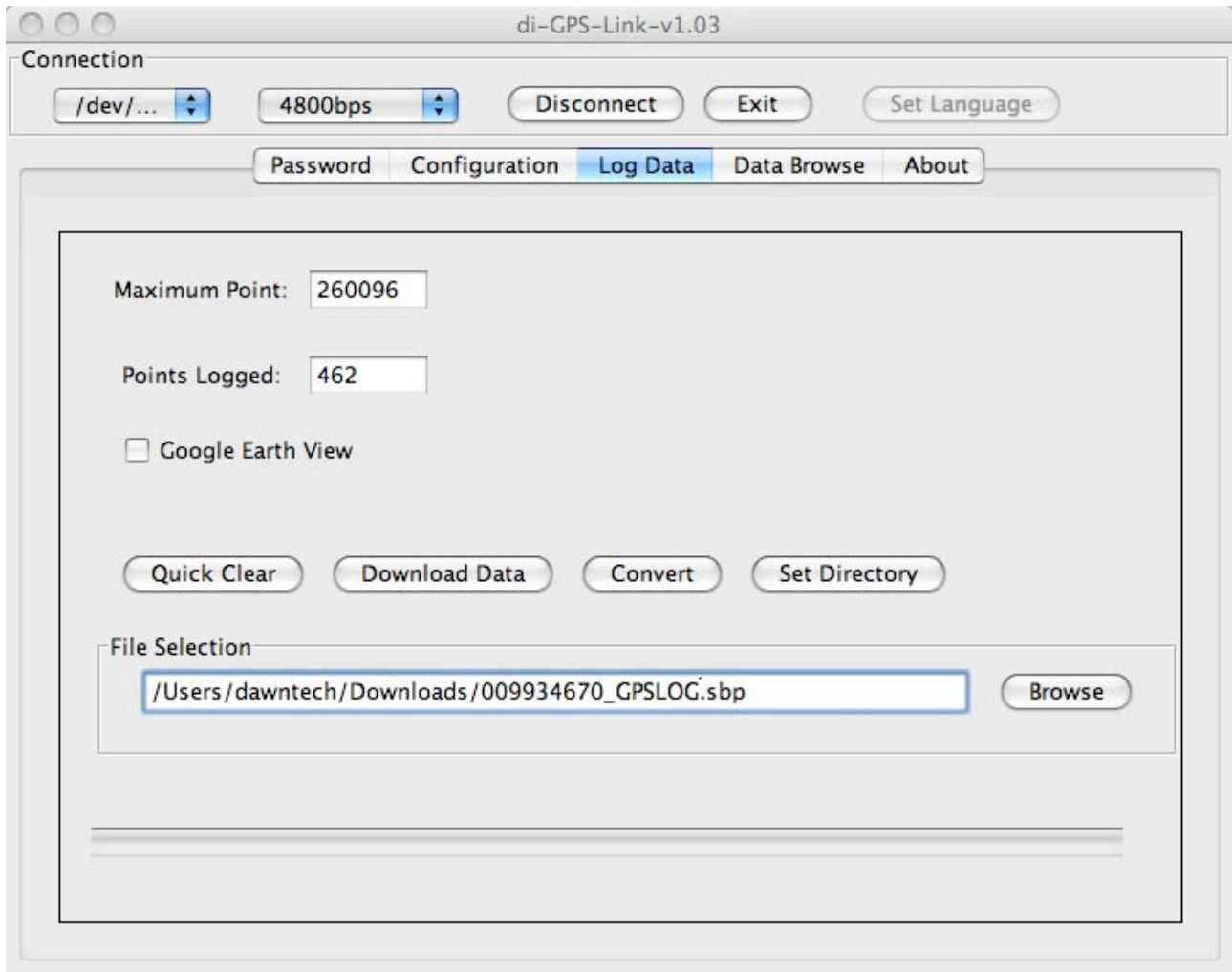
[Quick Clear] erase only sectors of flash memory of the unit with log data

[Download Data] download log data (in SBP format)

[Convert] convert SBP files to GPX/KML/NMEA files

[Google Earth View] check to view KML track on Google Earth automatically after SBP file conversion.

Google Earth software must be installed.

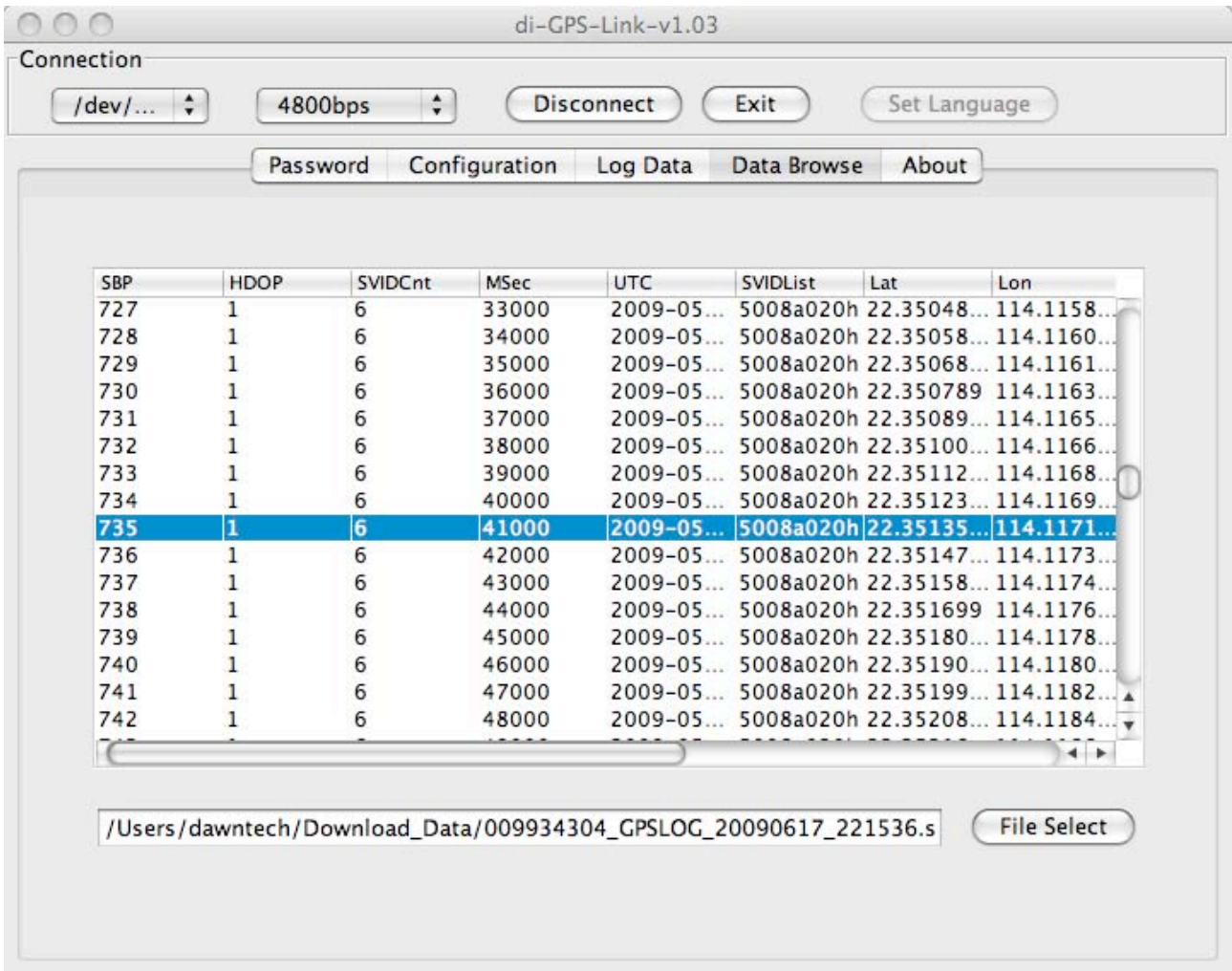


Data Browse:

The downloaded log data (SBP format) will be listed in Data Browse panel.

[File Select] select and load the SBP file to the data browse panel.

Double click to select a point to view it on Google Maps



Google maps 22.3513552,114.1171447 Search Maps Show search options
Find businesses, addresses and places of interest.

Get Directions My Maps
Tsing Kwai Hwy - more info »
Kwai Chung, Hong Kong
Directions Search nearby Save to... more ▾

